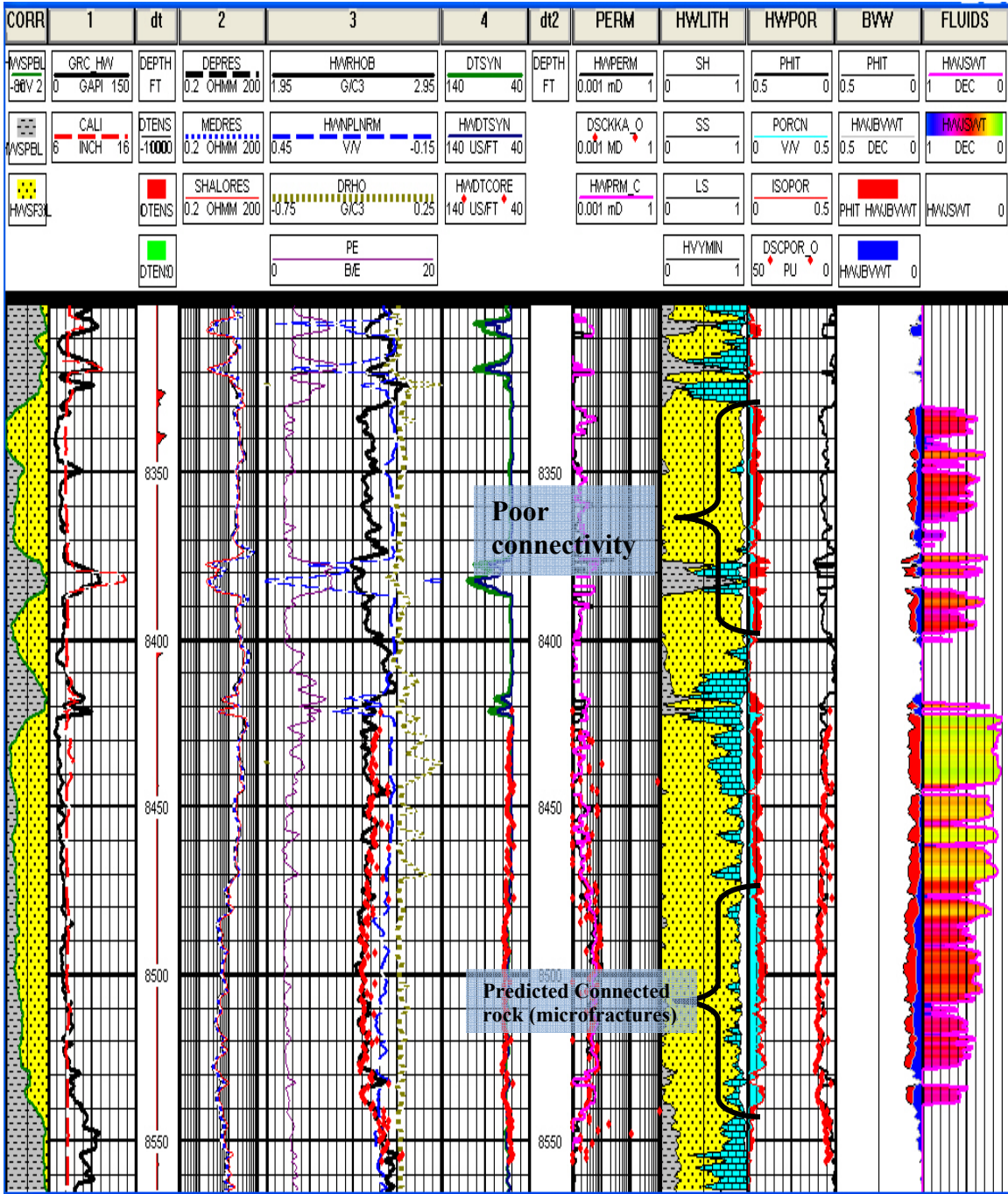


# TIGHT GAS SAND WALLACE INTERNATIONAL PETROPHYSICAL INVERSION EXAMPLE



Cyan color shading seen in the HWPOR (porosity) Track along the left side indicates the amount of connected (microfracture) rock versus the amount of isolated (unconnected) porosity seen in the red shade. Agreement with core permeability is observed.